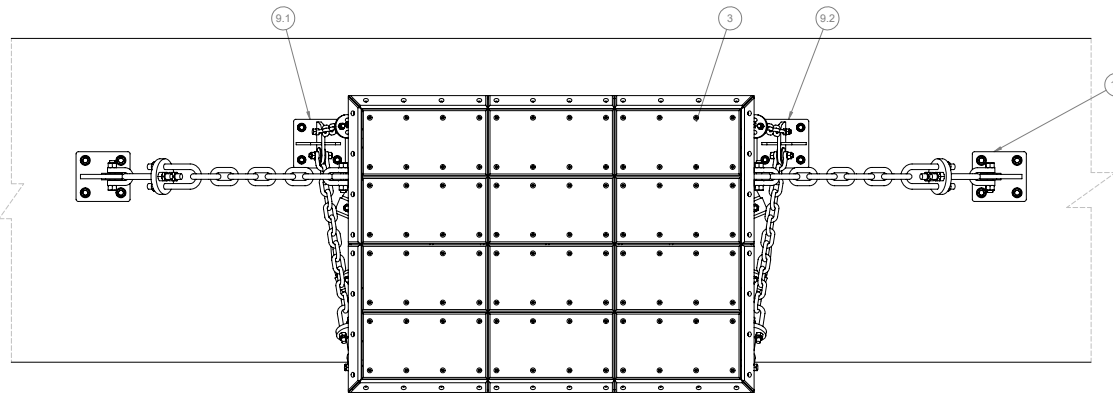
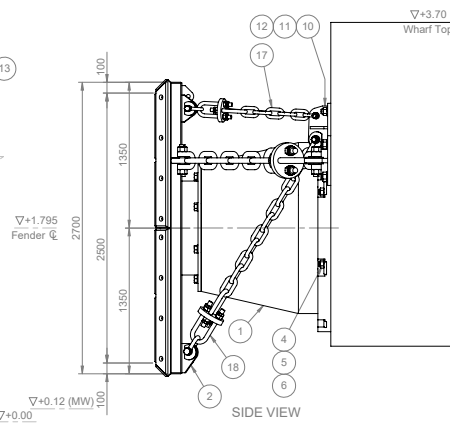


TOP VIEW



FRONT VIEW



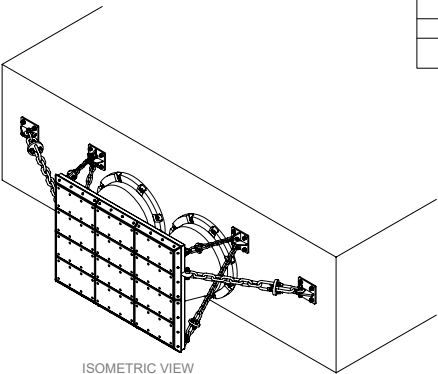
SIDE VIEW

Load cases	
Vertical	Horizontal
Full face contact	Full face contact
5° Vessel rolling (For Tension chain)	5° Berthing angle

Performance table	
Fender type	SCN 1200 F2.0
Rated deflection	70 %
Rated energy / System	1726 kNm
Rated reaction / System	2629 kN
Hull pressure	300 kN/m ²
Performance tolerance	±10%
Dimensional tolerance	±3 % or ±2mm (whichever is the greater)

NOTE:-
 - Performance values according to PIANC at 150mm/s for 2 x SCN1200 F2.0 At 70 % Deflection.
 - Performance testing will be done according to CV method.

PIANC steel thickness
 Exposed both side ≥12mm
 Exposed one face 9mm
 Internal (not exposed) 8mm



ISOMETRIC VIEW
SCALE 1:80

Part No.	Description	Qty./system	Material
1	Super cone fender, SCN1200 F2.0	2	Rubber+Steel
2	Frontal frame	1	S355J2/Equiv.(Painted)
3	Facing pad, 50 mm Thk, Colour: Black	1 Set	UHMW-PE (FQ1000DS)
4	EC2 Anchor, M42 x 4.5P, 530mmL, Fully threaded (Fender to wharf)	16	Gr. 8.8 (HDG)
5	Hex nut, M42 x 4.5P (For Fender to wharf)	16	Gr. 8 (HDG)
6	Fender 'L' washer (Suitable to SCN1200)	16	S235/Equiv.(HDG)
7	Hex bolt, M42 x 4.5P, 100mmL, Fully threaded (For fender to frame)	16	Gr. 8.8 (HDG)
8	Round washer, M42 (OD78 x ID45 x 7Thk.)	16	S235/Equiv.(HDG)
9.1	Tension and weight chain bracket-1 (For bracket to wharf)	1	S355J2/Equiv.(HDG)
9.2	Tension and weight chain bracket-2 (For bracket to wharf)	1	S355J2/Equiv.(HDG)
10	EC2 Anchor, M42 x 4.5P x 640mmL (For bracket to wharf)	8	Gr. 8.8 (HDG)
11	Hex nut, M42 x 4.5P (For bracket to wharf)	8	Gr. 8 (HDG)
12	Round washer, M42 (OD78 x ID45 x 7Thk.)	8	S235/Equiv.(HDG)
13	Shear chain bracket	2	S355J2/Equiv.(HDG)
14	EC2 Anchor, M48 x 5P, 640mmL Fully threaded (For bracket to wharf)	8	Gr. 8.8 (HDG)
15	Hex nut, M48 x 5P (For bracket to wharf)	8	Gr. 8.8 (HDG)
16	Round washer, M48 (OD92 x ID52 x 8Thk.)	8	S235/Equiv.(HDG)
17	Tension chain system (Open link Ø30 x 4D)	2 Sets	Gr. U3, Gr. S, Gr 8.8, Gr 8, S355J2/Equiv (HDG)
18	Weight chain system (Open link Ø35 x 4D)	2 Sets	Gr. U3, Gr. S, Gr 8.8, Gr 8, S355J2/Equiv (HDG)
19	Shear chain system (Open link Ø50 x 4D)	2 Sets	Gr. U3, Gr. S, Gr 8.8, Gr 8, S355J2/Equiv (HDG)

TRELLEBORG MARINE SYSTEM RECOMMENDED TESTING
PRE - PRODUCTION TESTING

Rubber Compound Composition Specification		
Химический состав резины		
Specyfikacja składu chemicznego mieszanki gumy		
Test	Standard	
Density	ISO 2781	< 1.20 g/cc
Плотность		
Gęstość		
Polymer %	ASTM D6370	> 45%
полимер		
Polimer %		
Carbon Black %	ASTM D6370	> 20%
сажа		
Sadza %		
Ash %		
popiół %	ASTM D297	< 5%
Зола		
Rubber filler ratio		> 1.2
Соотношение резинового наполнителя		
Stosunek zawartości gumy do wypełniacza		

POST - PRODUCTION TESTING

Rubber Compound Composition Specification		
Химический состав резины		
Specyfikacja składu chemicznego mieszanki gumy		
Test	Standard	
Density	ISO 2781	< 1.20 g/cc
Плотность		
Gęstość		
Polymer %	ASTM D6370	> 45%
полимер		
Polimer %		
Carbon Black %	ASTM D6370	> 20%
сажа		
Sadza %		
Ash %		
popiół %	ASTM D297	< 5%
Зола		
Rubber filler ratio		> 1.2
Соотношение резинового наполнителя		
Stosunek zawartości gumy do wypełniacza		

- Steel panel is designed according to Eurocode 3, mandatory for projects co-financed by EU.
 - Стальная панель разработана в соответствии с Eurocode 3, обязательный для проектов, совместно финансируемых ЕС.
 - Panel stalowy zaprojektowany zgodnie z Eurokod 3, obowiązkowe dla projektów dotowanych ze środków UE.

Note:-
 - All dimensions are in mm unless otherwise specified.
 - All views are in sheet scale unless otherwise specified.
 - All bolts shall be HDG to BS EN ISO1461 / ISO10384 to min thickness of 85 microns.
 - All chain brackets and washers shall be HDG to BS EN ISO1461 to min thickness of 85 microns.

Painting detail:-
 - Surface preparation: SA 2.5
 Painting system:-
 - Painting: As per ISO12944, C5-M (Very High Marine).
 - Primer coat:- Zinc epoxy.
 - Intermediate coat:- Epoxy (Minimum 2 coats)
 - Top coat:- Polyurethane.
 - Total DFT:- 320 microns.
 - Colour:- Blue (RAL 5005).

COMMERCIAL IN CONFIDENCE "This document contains confidential information. All rights (including copyright, confidential information, trade secrets and design rights) are owned by Trelleborg AB. No use or disclosure is to be made without prior written permission of Trelleborg AB. Copyright 2019 Trelleborg AB. All rights reserved."

DRAWN	Ravi.Patel	Trelleborg Marine Systems EMSA Trelleborg Offshore & Construction AB Johan Kocksgatan 10 SE-231 81 Trelleborg, Sweden Web: www.trelleborg.com/marine Tel: +46 4 10 51 0000 E-mail: tms.scandinavia@trelleborg.com	TMS UK Tel: +44 1666 511 770 E-mail: tms.uk@trelleborg.com
DESIGNED	Kaushal.Patel	TMS Brazil Tel: +55 11 5035 1353 E-mail: tms.brazil@trelleborg.com	TMS France Tel: +33 4 73 99 01 17 E-mail: tms.france@trelleborg.com
CHECKED	Kaushal.Patel	TMS Benelux Tel: +31 180 434 040 E-mail: tms.benelux@trelleborg.com	
CHECKED	Anders.S.Nilsson		
APPROVED	Anders.S.Nilsson		

Rev	DATE	DESCRIPTION	REV. BY	APR. BY	ZONE	SIZE A2
A	01/10/19	ISSUED FOR APPROVAL	KDP			

TITLE:-	GENERAL ARRANGEMENT DUAL SCN1200 F2.0 (WITH EC2 ANCHOR)	DRAWING NO :- LTU26344-11M01	Rev.
PROJECT:-	KLAPEDA STATE SEA PORT - 5.1.1	SHEET: 1 OF 1	VER.: 19

FOR APPROVAL

