

## YOUR CONFIGURATION DETAILS

<b>Product Model</b>	E1A Standard
<b>Compliance / Certification</b>	<ul style="list-style-type: none"> <li>Complies with European Directive 2014/30 Electromagnetic Compatibility</li> <li>Complies with European Directive 42/2006 Machinery Directive</li> </ul>
<b>Drive system</b>	Electric Homelift
<b>Duty load and Persons (kg)</b>	400 kg
<b>Rated Speed</b>	0,15 m/s

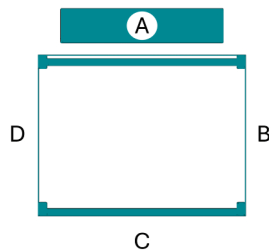
### SHAFT

<b>Installation</b>	Outdoor
<b>Type</b>	Steel structure
<b>Machine room</b>	MRL Machine Roomless
<b>Platform</b>	1350 x 1050
<b>Nr. Of stops</b>	2
<b>Nr. Of services</b>	2
<b>Nr. Of accesses</b>	2
<b>Travel</b>	4.66 m
<b>Headroom</b>	2450 mm
<b>Pit</b>	140 mm
<b>Fixing points and type (only for masonry shaft)</b>	

## CABIN

<b>Version</b>	FLEX version
<b>Included in version</b>	AR:IA: FLEX equipment, 2000 mm cabin height, with push-button panel equipped with 30° inclined buttons and braille, LCD display. The telephone is included. The red mushroom-shaped stop button is provided for swing doors. The walls and ceiling have a Titanium finish and the floor is studded black rubber. Cabin lighting consists of L-shaped LED strips in the corners between the ceiling and wall uprights. (Max 6 entrances available)
<b>Height</b>	2000 mm
<b>COP</b>	Vertical push-button panel with square buttons mm 50x50

### CABIN CONFIGURATION CHOSEN



#### Side A - Rail side

#### Wall A

SKINPLATE Titanium -

Included on this wall:

#### Side B - RH side

#### Nothing

-  
Included on this wall:

#### Side C - Front side

#### Wall C

SKINPLATE Titanium -

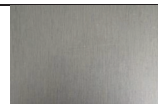
Included on this wall:

Side D - LH side

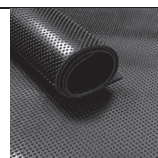
Nothing

Included on this wall:

**Roof colour** Roof SKINPLATE Titanium



**Cabin Floor** Black studded rubber



## CABIN OPTIONS included in this quotation

L-shaped 4000K LED cabin lighting

Emergency stop button

Gearbox heating device for temperatures below -5°C

## LANDING DOORS

P0-Door n. 1- SIDE D	
<b>Dimension:</b> 860 mm	<b>Height:</b> 2000 mm STD
<b>Colour:</b> Door VIMEC TYPE 7040 std	<b>Type:</b> Aluminium panoramic door
<b>Opening:</b> Door right	<b>Finish:</b> Standard finish
<b>Fireproof:</b>	Transparent

P1-Door n. 1- SIDE B	
<b>Dimension:</b> 860 mm	<b>Height:</b> 2000 mm STD
<b>Colour:</b> Door VIMEC TYPE 7040 std	<b>Type:</b> Aluminium panoramic door
<b>Opening:</b> Door left	<b>Finish:</b> Standard finish
<b>Fireproof:</b>	Transparent

## STRUCTURE/PROTECTIONS: Vimec Type 7040

A side	Blind sheet
B side	Trasparent glass
C side	Transparent glass
D side	Trasparent glass

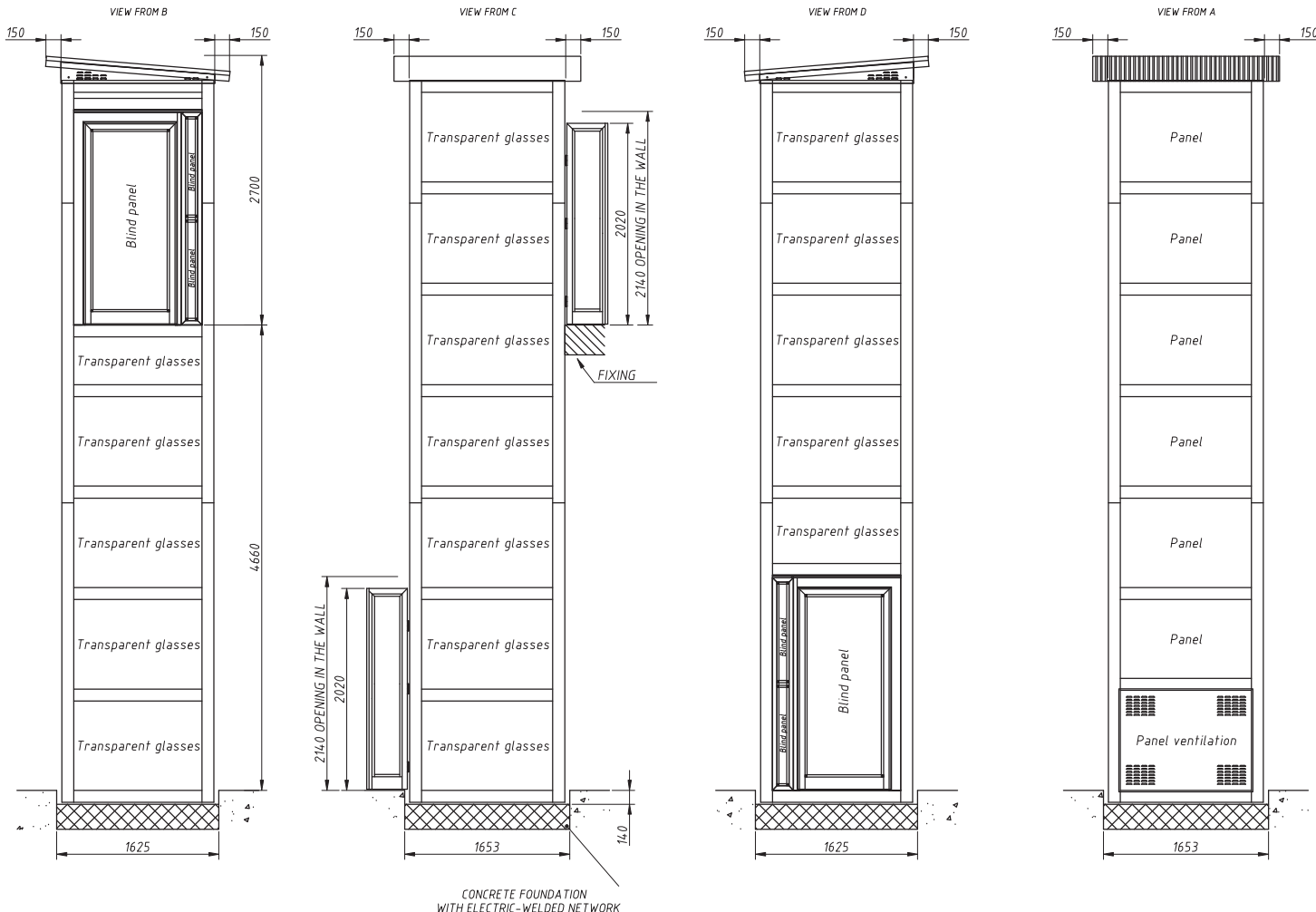
#### OPTIONS included in this quotation

Structure roof for Outdoor
----------------------------

#### Special parts

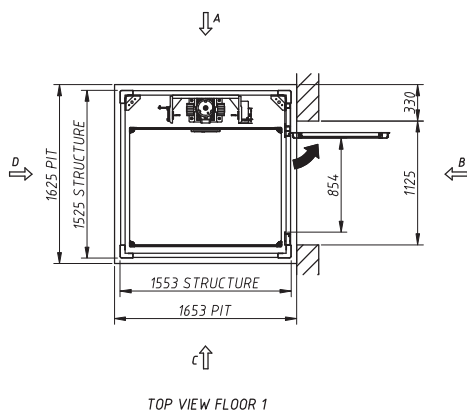
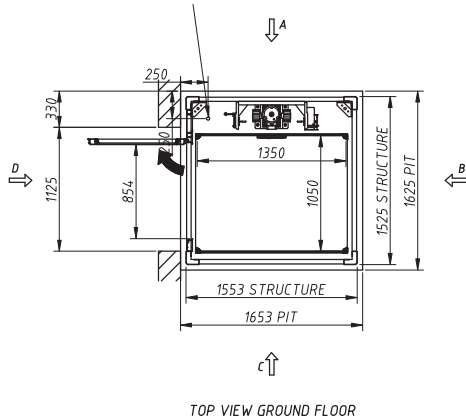
Existing Structure E7P695
Extra for alu. door with blind panel

A large, light gray watermark of the vimec logo is centered on the page. It consists of the word "vimec" in a bold, sans-serif font, with a small dot over the "i".



CONNECTION POINTS FOR EL. CABLES  
COMING FROM THE MAIN SWITCH

EXISTING METAL  
STRUCTURE E7P695



ORDER :	CAK807v1 - 26000374	DATE:	_____
CUSTOMER :	BALTUOS LIFTAI LTD.	STAMP AND SIGNATURE FOR ACCEPTANCE	
FINAL USER :	BALTUOS LIFTAI LTD.		
RIF. :	COPY OF E7P695		
MODEL :	E10 (vers.E1A AR1A)		
- PLEASE INDICATE:			
CABIN WALLS COLOUR:	Lato, Guide: SKINPLATE Titanium		
	Dx: _____		
	Sx: _____		
	Fronte: SKINPLATE Titanium		
CABIN FLOORING COLOUR:	Black studded rubber: _____		
DOORS COLOUR:	P0 Sx: RAL 7040   P1 Dx: RAL 7040		
	_____		
STRUCTURE COLOUR:	RAL7040.BUCCIATO.		

- IT IS EXTREMELY IMPORTANT THAT ALL THE SIZES INDICATED ARE ACCURATE AS IT IS NOT POSSIBLE TO CHANGE THE HEIGHT ONCE THE STRUCTURE HAS BEEN BUILT.
- BUILD THE PIT ACCORDING TO THE SIZES INDICATED ON DRAWING. THE ADJACENT FLOORING CAN BE FINISHED UP TO THE STRUCTURE WHEN INSTALLATION IS COMPLETE.
- PREARRANGE A Ø40 LOOM CONNECTING THE PIT WITH THE SITE WHERE THE MAIN SWITCH IS LOCATED.
- PREARRANGE A HOLE OF PROPER SIZES IN THE PIT FOR THE DRAINAGE OF RAIN WATER.
- THE STRUCTURE HAS TO BE FIXED TO THE FLOORS OF THE ARRIVAL LEVELS. AT LEAST ONE SIDE HAS TO BE FIXED IN ITS EXTERNAL POINTS AT EACH ARRIVAL LEVEL. IF THE FLOOR TO FLOOR EXCEEDS 3 METERS, YOU HAVE TO FIX TWO INTERMEDIATE POINTS.
- WE ALSO RECOMMEND YOU FIX ALSO THE UPPER PART OF THE STRUCTURE. THAT BECOMES MANDATORY IF THE UPPER PART IS HIGHER THAN 2.3 METRES.
- DRAWING FOR APPROVAL AND ACCEPTANCE OF COLLECTION WITHIN 30 DAYS FROM EQUIPMENT COMPLETION. DIFFERENTLY ORDER WILL BE CHARGED OF € 10,-/DAY UP TO MAX 60 DAYS - € 50,-/DAY IF OVER.

DATA DI EMISSIONE: \_\_\_\_\_ FIRMA

vimec