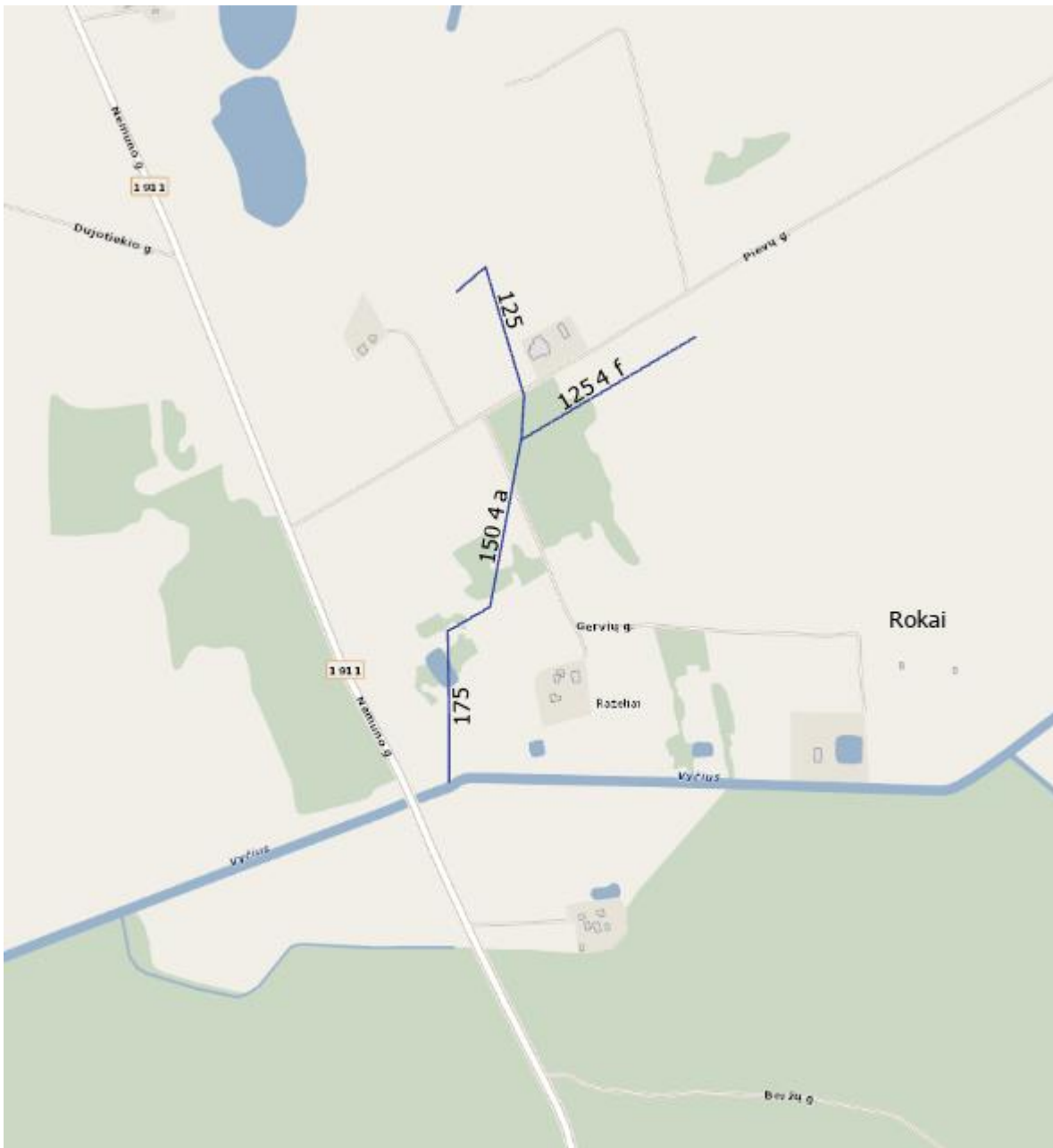
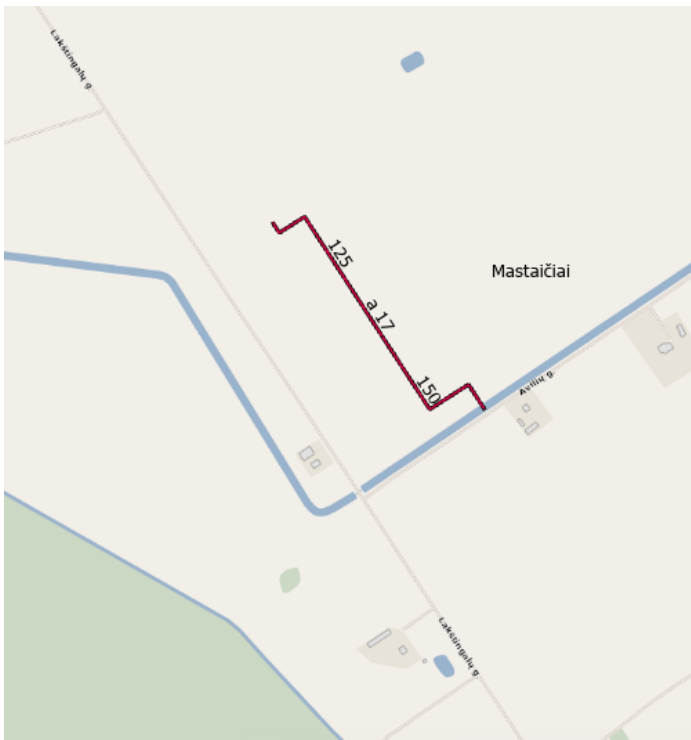
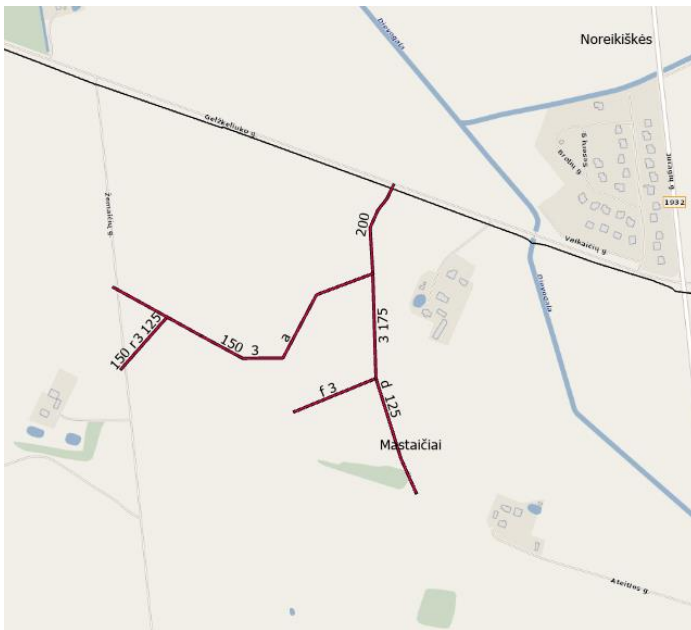


Rokų kv



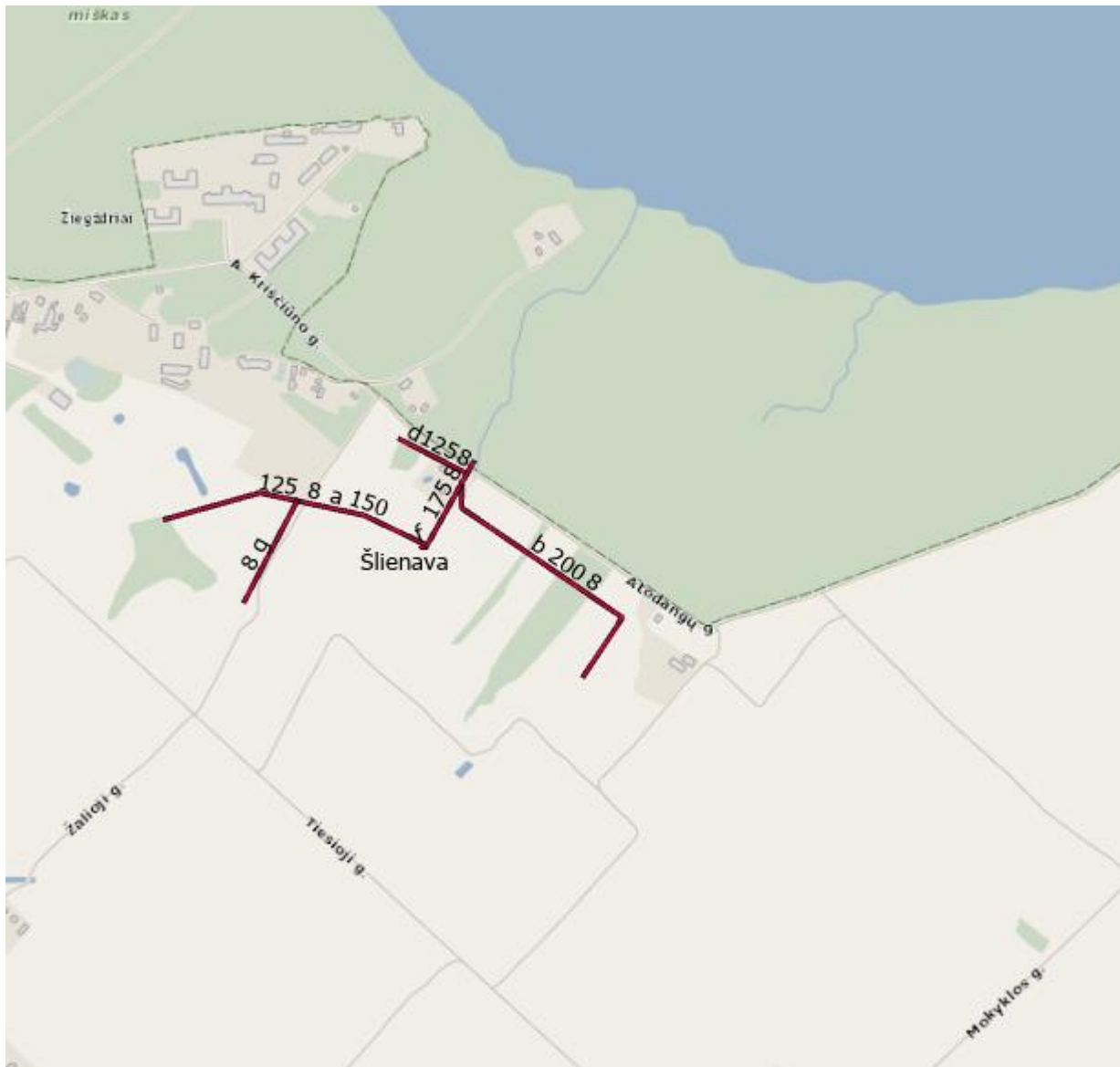
1	P21_1978_Rokai	4	a	175	KER	157,873
2	P21_1978_Rokai	4	a	150	KER	275,599
3	P21_1978_Rokai	4	f	125	KER	212,069
4	P21_1978_Rokai	4	a	125	KER	180,429

Mastaičių kv



	R2,3_1985_Mastaičiai	3	r	125	KER	87,116
	R2,3_1985_Mastaičiai	3	r	150	KER	32,2052
	R2,3_1985_Mastaičiai	3	a	150	KER	174,125
	P15_1972_Mastaičiai	17	a	150	KER	220,494
	P15_1972_Mastaičiai	17	a	125	KER	247,131
	P16_1972_Mastaičiai	3	d	125	KER	209,459
	P16_1972_Mastaičiai	3	f	125	KER	151,753
	P16_1972_Mastaičiai	3	d	175	KER	180,625
	P16_1972_Mastaičiai	3	a	200	KER	163,202
	P16_1972_Mastaičiai	3	a	150	KER	376,595

Šlienavos kv



1	R5_1987_Slienava	8	a	150	KER	221,504
2	R5_1987_Slienava	8	f	125	KER	12,0471
3	R5_1987_Slienava	8	b	200	KER	463,732
4	R5_1987_Slienava	8	d	125	KER	120,052
5	R5_1987_Slienava	8	a	125	KER	218,012
6	R5_1987_Slienava	8	a	175	KER	114,407
7	R5_1987_Slienava	8	a	400	GB	37,5314
8	R5_1987_Slienava	8	g	125	KER	181,112

28	R1_1987_Slienava	1	m	150	KER	6,05815
29	R1_1987_Slienava	1	g	125	KER	259,748
30	R1_1987_Slienava	1	f	125	KER	170,062
31	R1_1987_Slienava	1	f	150	KER	3,95351
32	R1_1987_Slienava	1	e	300	BET	815,072
33	R1_1987_Slienava	1	e	175	KER	149,109
34	R1_1987_Slienava	1	e-9	125	KER	10,685
35	R1_1987_Slienava	1	e-9	150	KER	6,36363
36	R1_1987_Slienava	1	e-8	150	KER	164,692
37	R1_1987_Slienava	1	e-8	175	KER	124,497
38	R1_1987_Slienava	1	e-8-1	125	KER	76,7831
39	R1_1987_Slienava	1	e-6	150	KER	121,405
40	R1_1987_Slienava	1	e-4	125	KER	119,851
41	R1_1987_Slienava	1	e-4	150	KER	98,0691
42	R1_1987_Slienava	1	e-2	125	KER	227,944
43	R1_1987_Slienava	1	e-2	150	KER	265,946
44	R1_1987_Slienava	1	e-2-4	125	KER	41,3191
45	R1_1987_Slienava	1	b	125	KER	20,0537

1	R1_1987_Slienava	1/e-8-1	F-5-1
2	R1_1987_Slienava	1/r1-1	F-5-1
3	R1_1987_Slienava	1š	F-5-1
4	R1_1987_Slienava	1e	ŠP-3
5	R1_1987_Slienava	1e	ŠP-3
6	R1_1987_Slienava	1e	ŠP-3
7	R1_1987_Slienava	1e	ŠP-3
8	R1_1987_Slienava	1e	ŠP-3
9	R1_1987_Slienava	1e	ŠP-3
10	R1_1987_Slienava	1a	ŠP-3
11	R1_1987_Slienava	1a	ŠP-3
12	R1_1987_Slienava	1a	ŠP-3
13	R1_1987_Slienava	1a	ŠP-3
14	R1_1987_Slienava	1a	ŠP-3
15	R1_1987_Slienava	1a	ŠP-3
16	R1_1987_Slienava	1a	ŠP-3
17	R1_1987_Slienava	1a	ŠP-3
18	R1_1987_Slienava	1a	ŠP-3
19	R1_1987_Slienava	1a	ŠP-3
20	R1_1987_Slienava	1/e-6	F-5-1
21	R1_1987_Slienava	1/e-6	F-5-1
22	R1_1987_Slienava	1r	F-5-1
23	R1_1987_Slienava	1r	F-5-1
24	R1_1987_Slienava	1a	ŠP-3
25	R1_1987_Slienava	1a	ŠP-3
26	R1_1987_Slienava	1a	ŠP-3
27	R1_1987_Slienava	1a	ŠP-3
28	R1_1987_Slienava	1/o-1	F-5-1
29	R1_1987_Slienava	1e	ŠP-3
30	R1_1987_Slienava	1e	ŠP-3

31	R1_1987_Slienava	1e	ŠP-3
32	R1_1987_Slienava	1/o-1	F-5-1
33	R1_1987_Slienava	1a	ŠP-3
34	R1_1987_Slienava	1a	ŠP-3
35	R1_1987_Slienava	1a	ŠP-3
36	R1_1987_Slienava	1a	ŠP-3
37	R1_1987_Slienava	1/e-4	F-5-1
38	R1_1987_Slienava	1e	ŠP-3
39	R1_1987_Slienava	1e	ŠP-3
40	R1_1987_Slienava	1e	ŠP-3
41	R1_1987_Slienava	1e	ŠP-3
42	R1_1987_Slienava	1e	ŠP-3
43	R1_1987_Slienava	1e	ŠP-3
44	R1_1987_Slienava	1e	ŠP-3
45	R1_1987_Slienava	1/e-2-4	F-5-1
46	R1_1987_Slienava	1a	IS-400
47	R1_1987_Slienava	1a	ŠP-4
48	R1_1987_Slienava	1a	ŠP-4
49	R1_1987_Slienava	1a	ŠP-4
50	R1_1987_Slienava	1a	ŠP-4
51	R1_1987_Slienava	1a	ŠP-4
52	R1_1987_Slienava	1a	ŠP-3
53	R1_1987_Slienava	1a	ŠP-3
54	R1_1987_Slienava	1a	ŠP-3
55	R1_1987_Slienava	1a	ŠP-3
56	R1_1987_Slienava	1a	ŠP-3
57	R1_1987_Slienava	1a	ŠP-3
58	R1_1987_Slienava	1a	ŠP-3
59	R1_1987_Slienava	1k	PPZ-40